



Volumizing Mascara

Why You'll Love It

Lush, lavish, and dramatic, full lashes. Our aloe inspired *flawless by Sonya™* Volumizing mascara creates volume and curl for glamorous, dramatic lashes coating each lash with a velvety finish, leaving them looking beautiful, healthy and flawless.

How to Create It

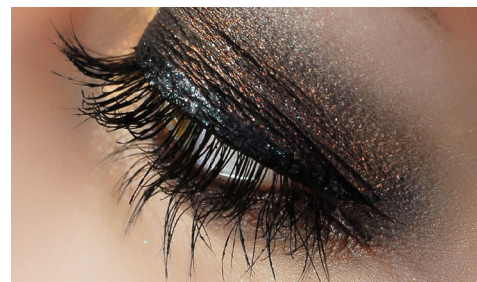
Apply the mascara from the base of the lashes to the lash tips; when brush is at the base, make a subtle zigzag motion with your hand which helps capture all of your lashes in the brush. Apply multiple coats to create gorgeous, dramatic, flawless lashes.

Black

415

Black

Water/Aqua/EAU, Copernicia Cerifera (Carnauba) Wax/Cera Carnauba/Cire De Carnauba, Cyclopentasiloxane, Oryza Sativa (Rice) Bran Wax, Hydrogenated Olive Oil Stearyl Esters, Stearic Acid, Alcohol Denat., Triethanolamine, Acacia Senegal Gum, Euphorbia Cerifera (Candelilla) Wax/Candelilla Cera/Cire De Candelilla, Glycerin, VP/VA Copolymer, Phenoxyethanol, Glycine Soya (Soybean) Oil, Aminomethyl Propanediol, Panthenol, Polyvinyl Alcohol, Chlorphenesin, Ascorbyl Palmitate, Ethylhexylglycerin, Hydrolyzed Ceratonia Siliqua Seed Extract, Zea Mays (Corn) Starch, Aloe Barbadensis Leaf Extract, Potassium Sorbate, Sodium Benzoate, Polyquaternium-7, Biotinoyl Tripeptide-1, Guar Hydroxypropyltrimonium Chloride, Iron Oxides (CI 77499).



You Will Also Love

flawless by Sonya™ Perfect Pair Eyeshadow

flawless by Sonya™ Lengthening Mascara

flawless by Sonya™ Defining Eye Pencil

Sonya™ Eyelash Curler

