



Aloe Fleur de Jouvence[®] Mask Powder

Mask Powder is a unique combination of rich ingredients chosen for their special properties to condition the skin and cleanse the pores. It is designed to blend perfectly with our Aloe Activator to create a thin mask for easy application to the face and neck. Albumen and corn starch provide drawing and tightening properties, while kaolin absorbs excess oils. Allantoin and chamomile help to condition and rejuvenate the skin.

INGREDIENTS

Albumen, Zea Mays (Corn) Starch, Kaolin, Allantoin, Chamomilla Recutita (Matricaria) Flower Extract, Diazolidinyl Urea, Fragrance (Parfum), Red 27 Lake (CI 45410).

CONTENTS

NET WT. 1 Oz. (29 g)

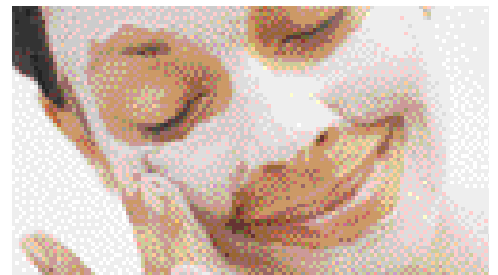
DIRECTIONS

Add one mixing spoon of Mask Powder to the mixing bowl. Combine with one mixing spoon

of Aloe Activator until the mixture has the consistency of lotion. Use the applicator brush to apply a thin, even film from the neck upward. Relax in a reclining position, limiting facial movement for approximately 30 minutes.

Apply a moist towel to the face to soften the mask, then gently remove remaining mask and rinse with warm water. Follow with toner and your favorite moisturizer.

NOTE: Muscular contraction may be seen and felt shortly after application of the mixture. Occasional slight itching may occur. Should this happen, simply press gently on the spot with the fingertip, until the itching stops. Do not rub or scratch.



- Blend with Activator to create the Facial Mask
- Smooths, cleanses and tightens skin
- Contains Chamomile to soothe and calm sensitive skin
- Combine with 1/2 teaspoon of honey for an extra special treat



PRODUCT #341