



Luscious Lip Colour

Why You'll Love It

Light up your lips with *flawless by Sonya™* Luscious Lip Colour.

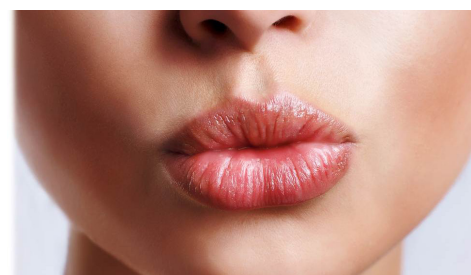
This luxurious, nourishing gloss is infused with our very own Aloe Vera. The wand lights up for perfect coverage in any light. Perfect your lips using the built-in mirror for flawless application. Shimmering glosses are great for attracting light and creating a sensational smile.

How to Create It

Use alone for a sheer, shimmering look or layer over your favorite *flawless by Sonya™* Delicious Lipsticks. Why use just one? Create your own style by mixing your favorite colors together.

Line and define your lips with Defining Lip Pencil in your favorite shade before applying Luscious Lip Colour.

Double Diamond	423
Orange Glow	424
Party Purple	425
Perfect Pink	426
Cappuccino	427



More to Love

flawless by Sonya™ Defining Lip Pencil

flawless by Sonya™ Delicious Lipstick

